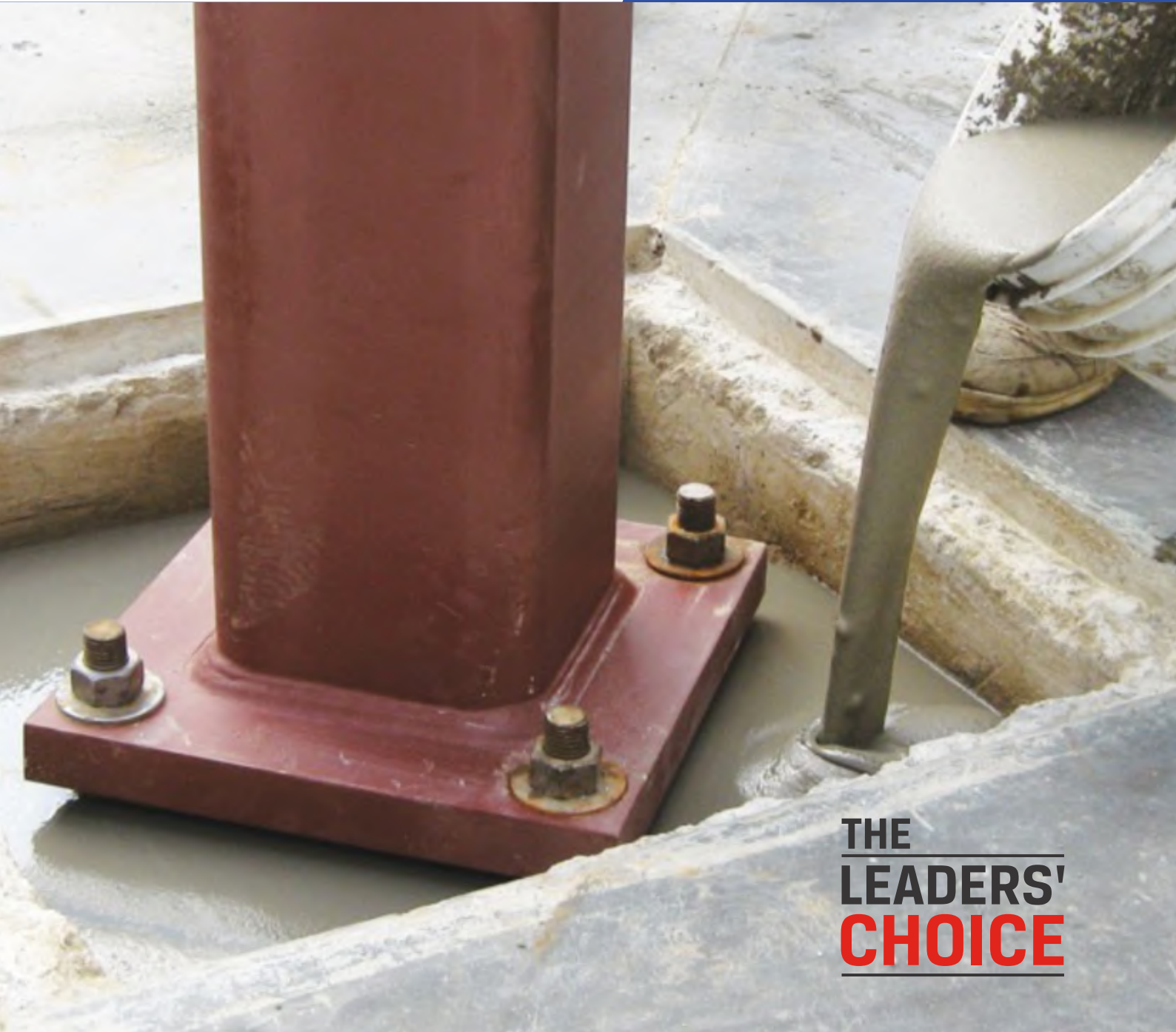




**STEEL
GROUTS
RANGE**



**THE
LEADERS'
CHOICE**

PRECISION STEEL GROUTS

SG1 FLOWABLE

STEEL GROUTS RANGE

High Performance & High Strength Grout

JSW Steel Grout SG1 is a cementitious flowable, non-shrink, high-strength grout for precision application like repair, RCC structures, heavy machinery foundations, etc. JSW Steel Grout SG1 is engineered for precision grouting where it is essential to withstand static and dynamic loads.

USAGE AREAS

- Base plate foundations of heavy machinery and equipment foundations, like boiler foundations and turbine generator bearings
- Cavities, gaps, recesses and anchorage
- Bridge-bearing pads and structural columns in precast crane rail construction grouting



Highly Flowable



Non shrink
Non Expansive



High Strength

Compressive Strength	PACK SIZE:	BEST BEFORE
100 MPA	25 kg	6 months

SG2 FLOWABLE

STEEL GROUTS RANGE

High Performance Grout

JSW Steel Grout SG2 is a cementitious flowable, non-shrink, high-strength grout for precision application like repair, RCC structures, heavy machinery foundations, etc. JSW Steel Grout SG2 is engineered for precision grouting where it is essential to withstand static and dynamic loads.

USAGE AREAS

- Base plate foundations of heavy machinery and equipment foundations, like boiler foundations and turbine generator bearings
- Cavities, gaps, recesses and anchorage
- Bridge-bearing pads and structural columns in precast crane rail construction grouting



High Strength



Non shrink
Non Expansive



Highly Flowable

Compressive Strength	PACK SIZE:	BEST BEFORE
80 MPA	25 kg	6 months

SG3 FLOWABLE

STEEL GROUTS RANGE

General Purpose Precision Grout

JSW Steel Grout SG3 is a cementitious flowable, non-shrink, high-strength grout for precision application like repair, RCC structures, heavy machinery foundations, etc. JSW Steel Grout SG3 is engineered for precision grouting where it is essential to withstand static and dynamic loads.

USAGE AREAS

- Base plate foundations of heavy machinery and equipment foundations, like boiler foundations and turbine generator bearings
- Cavities, gaps, recesses and anchorage
- Bridge-bearing pads and structural columns in precast crane rail construction grouting



Non-shrink Grout



Self-compactable



High Durability

Compressive Strength	PACK SIZE:	BEST BEFORE
60 MPA	25 kg	6 months

ROAD INSTA CURE STEEL GROUTS RANGE

CEMENTITIOUS FLOWABLE NON-SHRINK RAPID HARDENING GROUT FOR ROAD APPLICATION

JSW Road Insta Cure is a cementitious flowable non shrink,rapid hardening mix for precision application like repair Road cracks/Structures instantly. **JSW Road Insta Cure** is the blending of cement, cementitious materials, along with graded fillers and polymers. **JSW Road Insta Cure** is engineered designed for precision repair grout where it is essential to withstand crack free road repairs with instant cure fast setting and rapid hardening.

USAGE AREAS

- Concrete roads
- Precast concrete repair
- RCC concrete slab/beam
- Airport concrete repair



Self-compactable



Non shrink
Non Expansive



Very rapid strength
generation and hardening

Compressive Strength 2hrs to 28 days	PACK SIZE:	BEST BEFORE
M 20 - M 80	25 kg	6 months

GUN GRADE STEEL GROUTS RANGE

PUMPABLE GUN GRADE MORTAR FOR TIE - ROD HOLE APPLICATION

JSW SteelGrout - Gun Grade Mortar is recommended for filling of tie rod hole/slit holes in concrete and natural stones.

USAGE AREAS

- tie rod hole
- Slit Holes
- Natural Stones



tie rod hole



Faster Completion
of Work



Nil shrinkage

Compressive Strength	PACK SIZE:	BEST BEFORE
8 - 10 MPA	25 kg	12 months



REGISTERED OFFICE

JSW Centre, Bandra Kurla Complex, Near MMRDA Grounds, Bandra East, Mumbai 400 051

MARKETED BY:

JSW Green Cement Pvt. Ltd. Babukhan Millenium, Centre, 6-3-1099/1100, No. 702, Block-A, Somajiguda, Hyderabad, Telangana, India, Pincode - 500 082

Email: info@jswcement.in | **Website:** www.jswcement.in | **Toll free:** 18002662661

SCAN HERE FOR TDS



SCAN HERE

